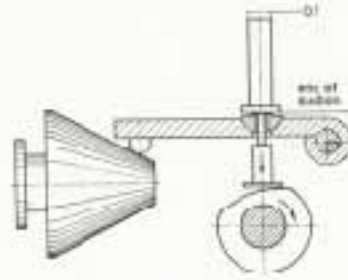
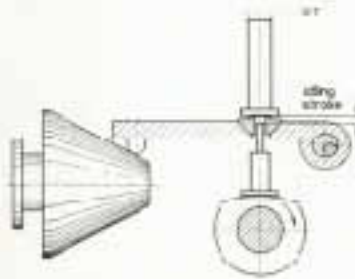


commencement of suction

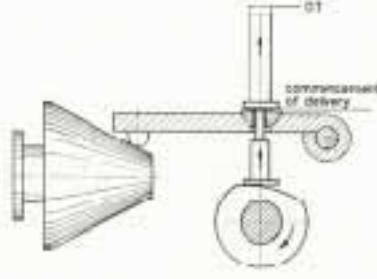


end of suction

The travel of the plunger from TDC to rest position on the rocker is called suction stroke.

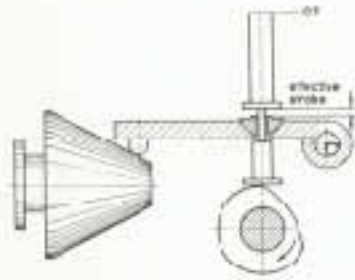


idling stroke



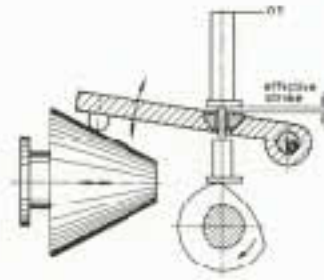
commencement of delivery

The travel of the tappet rod from plunger rest position on the rocker up to plunger 'lift up' (commencement of delivery) is called tappet rod idle stroke.



end of delivery

The travel of the plunger from the control cam actuated rocker to TDC is called effective stroke.



stroke adjustment

The effective stroke is limited by lifting the control cam actuated rocker.